

Who is Enthought?

PyCon Japan 2019

Kuya Takami



Enthought Quick Facts

FOUNDED

2001

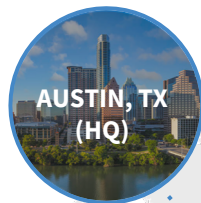
FOCUS

Digital Transformation for
Science Companies

TECHNICAL TEAM PROFILE

85% advanced degrees
70% PhDs

GLOBAL OFFICES



Enthought Ushers in the Python Revolution

2001

Enthought launches SciPy
(Scientific Python Community)



MATLAB-like
Scientific Toolbox



Machine Learning



3D Visualization

2008

MIT changes
CS / Engineering
curriculum
to Python



Carnegie
Mellon



2012

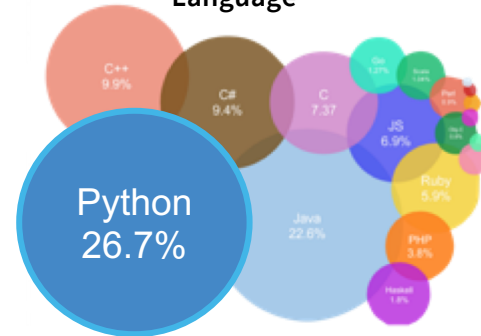
Python / SciPy become
important to JP Morgan,
Exxon, and Caterpillar's
analytical tool set

J.P.Morgan



2016

Python reigns as the
“Most Popular Coding
Language”



2017

Python dominates
deep learning
toolsets



Google Tensorflow



Nervana Library/ASIC



Baidu Paddle

A Few of Enthought's Customers



Raytheon



Asahi KASEI



**ThermoFisher
SCIENTIFIC**



**Boston
Scientific**

P&G

Schlumberger



SAMSUNG



National Institutes
of Health



NIST

Genentech
A Member of the Roche Group



TEL
TOKYO ELECTRON

Enthought at a Glance

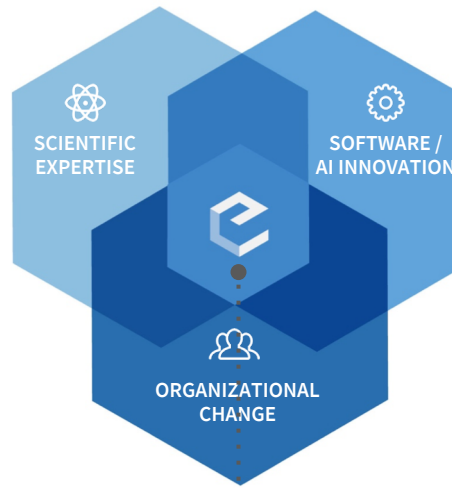
Enthought is a leader in
Scientific Computing,
AI, Modeling & Simulation

Industries:
Oil & Gas, Life Sciences,
Chemicals/Polymers, and
Semiconductors

Enthought is engineering and
science focused. We build solutions
that accelerate research and
engineering analysis

ENGINEER / SCIENTIST SKILLS

- STEM Disciplinary Education
- Machine Learning
- Deep Learning
- Statistics
- Image/Signal Processing
- Engineering Intuition
- Modeling and Simulation
- Optimization
- Pragmatic Business Sense



*Enthought team members have the
unique combined skill set*

SOFTWARE ENGINEERING SKILLS

- Application Architecture
- System Architecture
- Object-Oriented Design
- Big Data Architecture
- Database Design
- Visualization
- Cloud Architecture

Introduction to Enthought

- Global leader in scientific and analytic computing with Python for over 15 years
- Software, consulting, training, and support, focused on the Python platform
- Over 1 million user downloads of our software products
- Headquartered in Austin, Texas with additional global offices in Cambridge, Houston, and Tokyo
- >100 employees world-wide (over half of technical staff have PhDs)

Confidential and Proprietary

What Does Enthought Do?



Software

Python tools for data analysis, development, and deployment



Training

Live, virtual, and online Python training solutions



Support

Python experts are just a click or call away



Consulting

Fast-tracking innovation

www.enthought.com

Science Matters



Science



Technology



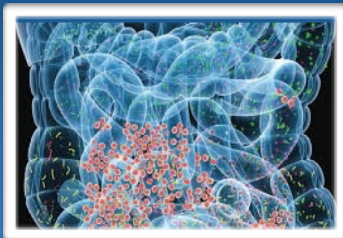
Org Change/
Business



People

Enthought speaks many science dialects -
we are scientists that code.

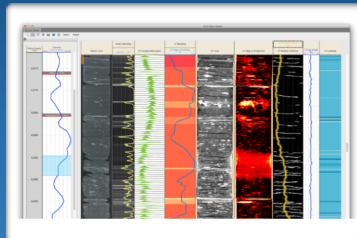
Entthought Platform



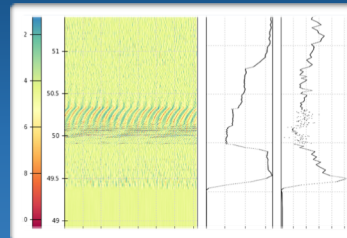
Microbiome
Characterization



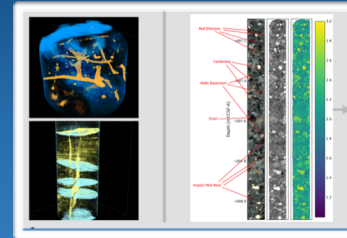
DNA Sequencing
Chip



Digital Geology
with Machine Learning



Drill Rock
Layer Classifier



Cross-Domain
Geoscience Analysis



Rapid Application Development Platform



DATA MANAGEMENT



Data Catalog



Scalable Object &
File Storage



Array Store &
Partial Access

COMPUTE & AI



AI &
Machine Learning



Graph Compute
& Remote Exec



Desktop App
Rapid Dev Tools

DEPLOYMENT



Code
Deployment



Infrastructure
Management



Deployment
Server

SECURITY & ACCESS



Authentication
Authorization



Web Dashboards
Remote Access



Client Deploy &
Packaged Python



Are You a “Scientist Who Codes”? Join Us!

Scientific Software Developers | Python Technical Trainers



MANUFACTURING



OIL & GAS



LIFE SCIENCES



CHEMICALS



DATA STRATEGY



MODELING & SIMULATION



MACHINE LEARNING



TRAINING